

A photograph of a female teacher with long brown hair, wearing a beige blazer, smiling and looking down at a student's work. The student, a young girl with blonde hair in a ponytail, is also smiling and looking at her work. The teacher is holding a silver pen over an open notebook. The background is a blurred classroom setting with other students and colorful posters on the wall.

# Web-Centric ACP

*Teacher Course Catalog*






# TABLE OF CONTENTS

---

03	About Us, Mission	11	Certification Exams
04	Why Web-Centric	12	Exam Preparation
05	Program Overview	13	Field Experience
06	Certification Areas	14	Internship
07	Path to Certification	15	Clinical Teaching
08	Admission Requirements	16	Fully Certified
09	Instructional Courses	17	Program Pricing
10	Observational Videos, Grading & Feedback	18	Additional Costs
		19	FAQs



“

What greater joy can a teacher  
feel than to witness a  
child's success?

MICHELLE L. GRAHAM





# About Us

Web-Centric is a family owned and operated, fully accredited, online teacher certification program. Created by educators with over 60 years combined experience in Texas schools, we take pride in our excellent customer service and ability to provide our candidates with the essential foundation to successfully transition into the teaching profession.

## Our Mission

We seek to prepare highly qualified future Texas educators. Our priority is equipping you with the most effective tools so that you can step into the classroom with confidence. Through our program's proven coursework and training, you will be prepared to make a difference in the lives of your students and community.



# Why Web-Centric?

## **FLEXIBLE & SELF-PACED**

Whether you are ready to get in the classroom now or need a program that is going to work with your busy schedule, we have you covered! Our 100% online program lets you work through the curriculum at your own pace from the comfort of your home.

## **AFFORDABLE RATES**

### **No Application Fee!**

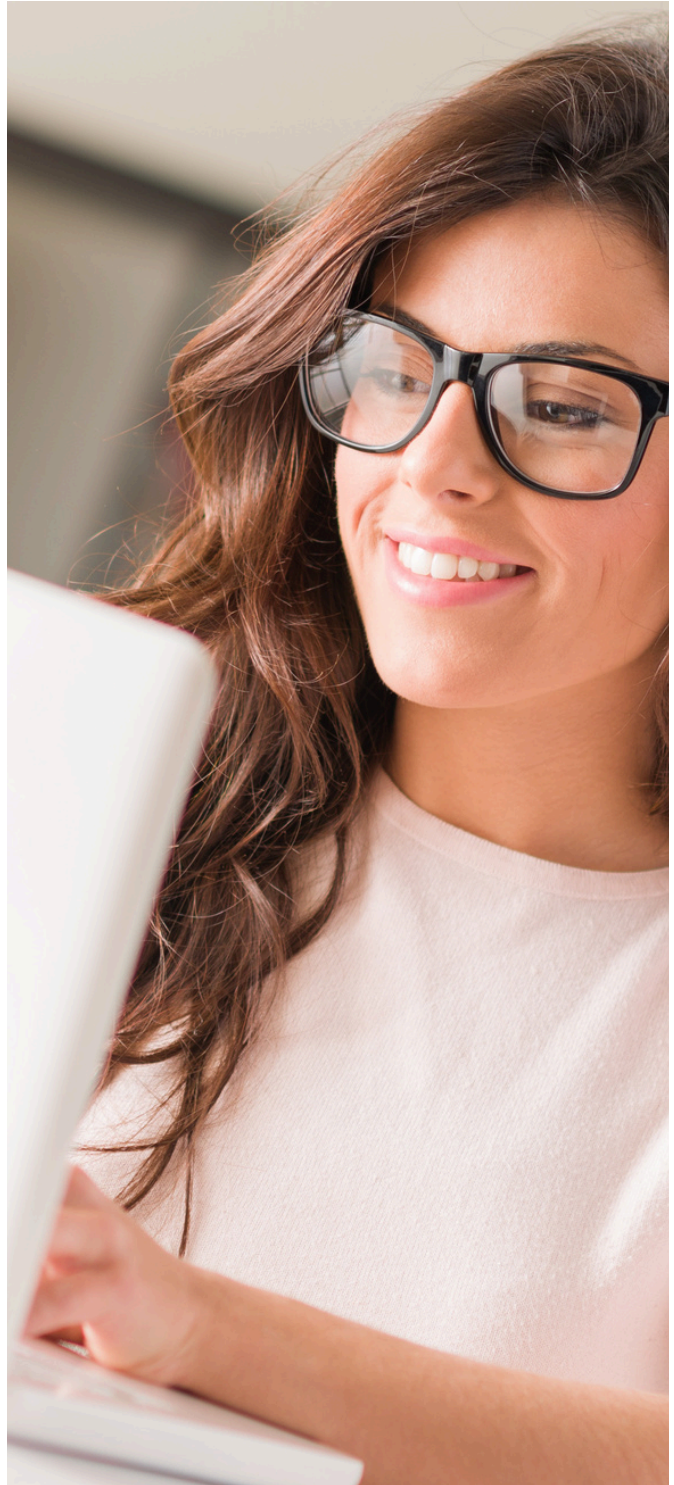
WCACP is the most affordable online certification program in Texas! With low monthly payments of just \$99 until you start your field experience in the classroom.

## **EXCELLENT CUSTOMER SERVICE**

You will be assigned to a Program Specialist that will assist you in each phase of the certification process. If you need help or have a question, they will be there to give you a timely and accurate response.

## **TEACHER TESTIMONIALS**

Don't take it from us, see what other teacher candidates have to say about our program by clicking [here](#)!





# Program Overview



## ENROLLMENT

Submit your **online application**. Quick review process to get you started!



## PRE-SERVICE TRAINING

Complete the online coursework, field based observations, and pass your TExES content exam(s).



## FIELD EXPERIENCE

Start teaching! Obtain a teaching position for one academic school year for Internship or complete a 14 week Clinical Teaching assignment.



## FULLY CERTIFIED

Upon successful completion of your field assignment and all program requirements, earn your standard certificate.



# Certification Areas

To determine eligibility for a particular certification area, your college transcripts will be reviewed during the admission process. Please [click here](#) for more information regarding admission requirements for each area.

## ALL LEVELS: EARLY CHILDHOOD-GRADE 12

- Art
- Health
- LOTE (Spanish)
- Music
- Physical Education
- Special Education

## EARLY CHILDHOOD - GRADE 6

- Core Subjects with STR
- Core Subjects with STR / Bilingual

## GRADES 4 - 8

- Core Subjects with STR
- Core Subjects with STR / Bilingual
- ELAR with STR
- ELAR / Social Studies with STR

## GRADES 4-8 CONT.

- Math
- Science
- Social Studies

## GRADES 6 - 12

- Business & Finance
- Physical Science

## GRADES 7 - 12

- English Language Arts & Reading
- History
- Life Science
- Math
- Science
- Social Studies
- Speech

## SUPPLEMENTAL AREAS

- ESL
- Gifted & Talented



# Path to Certification

The Web-Centric program allows individuals the flexibility to move at their own pace. The following time line demonstrates how candidates progress through the program.



# Admission Requirements

Applicants must meet basic admission requirements and possess the necessary college credits for a particular certification area.



## Bachelor's Degree

Must hold a 4-year bachelor's degree from an accredited institution as required by the TEA and Texas Administrative Code



## Minimum 2.5 GPA

2.5 cumulative GPA or 2.5 GPA for final 60 hours

Concerns about your GPA?  
Learn about GPA exemption



## Conferred Transcripts

Eligibility for a certification area is determined by reviewing your transcripts.  
Learn about specific requirements of each area



## Still in College?

If you have not yet graduated, you will be eligible to start the program in your last semester of college. Learn about contingency admission



Applicants who graduated outside of the US will need to submit additional paperwork during the admission process. Learn more



# Pre-Service Instructional Courses

## MODULE 1 - SECTION 1

### *Effective Educators*

- Certification Secrets
- Designing Instruction & Assessment to Promote Student Learning
- Creating a Positive, Productive Classroom Environment
- Implementing Effective, Responsive Instruction and Assessment
- Fulfilling Professional Roles & Responsibilities

## MODULE 1 - SECTION 2

### *Instructional Strategies*

- Learning Styles
- Learner-Centered Concepts
- Learning Theory
- Differentiated Instruction
- Development and Learning
- Cognitive Processing
- Structure of Disciplines
- Assessments
- Lesson Planning

## MODULE 1 - SECTION 3

### *Instructional Strategies*

- Lesson Presentation for Digital Natives
- SPED for the Classroom Teacher
- ESL for the Classroom Teacher
- Bilingual Education for the Classroom Teacher
- Gifted & Talented for the Classroom Teacher
- Understanding Texas State Testing STAAR
- Supporting Mental Health
- The School Community
- Professional Development

## MODULE 2 - SECTION 1

### *Classroom Management*

- Classroom Management Week 1
- Teaching Responsible Behavior
- Rules and Procedures
- Proactive Behavior Management
- Providing Supportive Feedback
- Communication
- Engaging Students

## MODULE 2 - SECTION 1

### *Classroom Management*

- Organizing the Classroom & Learning Groups
- Managing Problem Behavior
- Support from Parents & Administrators
- Student Motivation
- Different Classroom Management Styles

## READING SAFARI SERIES

### *Four-part class series*

- Beginning Reading Instruction - Phonics & Word Recognition
- Promoting Vocabulary Development
- Comprehension Instruction
- Research-Based Content Area Reading Instruction

## PRE-SERVICE SERIES

### *Two-part class series*

- Planning A Learner-Centered Classroom and Instruction
- Instruction, Communication and Professionalism

# Observational Videos

## INTERESTING, STUDENT-CENTERED CLASSROOM LEARNING VIDEOS

Texas requires completion of 50 clock hours of field based experiences (FBE's), or classroom observation, prior to starting your field assignment. Web-Centric allows you to complete 25 of these hours virtually, by watching approved videos from our online library. These videos will teach you successful instructional strategies and classroom management techniques.



## Grading & Feedback

Teacher curriculum assignments include quizzes, journals, short answer writing prompts, forum posts, and lesson planning. The minimum passing score for all assignments is 80%.

Quality work is expected, just as you will expect quality work from your students. Any work not meeting the standards will be returned, and the candidate will need to re-submit.

Our instructors are certified teachers in the state of Texas, and look forward to working with you as you work toward your certification goal. Assignments are graded and feedback is provided to you within 2-3 business days.



# Certification Exams

## TEXES CONTENT EXAM

As part of the teacher certification process in the state of Texas, you will be required to pass a subject specific certification exam, known as a TExES content exam.



You must pass your TExES content exam(s) to receive a Statement of Eligibility letter, which will be required to obtain a teaching position.

## PEDAGOGY & PROFESSIONAL RESPONSIBILITIES (PPR) EXAM

In addition to your content exam, you will be required to pass the Pedagogy & Professional Responsibilities (PPR) exam to receive your standard certificate.

The PPR exam may be taken prior to starting your field assignment, or during your field assignment. However, it is to your benefit to have it passed before.

## SCIENCE OF TEACHING READING (STR) EXAM

Beginning January 1, 2021, all teachers seeking certification in the following fields will be required to pass the STR exam as part of the certification process.



- Core Subjects EC-6
- Core Subjects 4-8
- English Language Arts & Reading 4-8
- English Language Arts & Reading / Social Studies 4-8

The STR exam is designed to assess whether the examinee is proficient in the STR standards and has obtained the requisite knowledge and skills to practice teaching early reading.

# Exam Preparation

To prepare for your certification exams it is recommended that you download the state preparation manual to familiarize yourself with the competencies to be tested, exam question formats, and pertinent study resources.

Click [here](#) to visit the state's test administrator, Pearson. Here you can search for your specific TExES exam and find many resources to help you prepare.





# Field Experience

## ONE-YEAR TEACHING INTERNSHIP

Upon entering the program, you will begin applying for teaching positions in your certification area at TEA accredited campuses. This one-year teaching role will allow you to be paid as you work toward completing your certification requirements.

## CLINICAL TEACHING PLACEMENT

Complete a 14-week, guided assignment alongside an experienced, certified, cooperating teacher. Web-Centric will find your placement for you so you don't have to! This option is unpaid.



# Internship

With this route, you will secure and complete a one-year (two semesters), full-time, paid teaching position in your certification area with a Texas school district, TEA recognized private school, charter school, or head start program.

## REQUIREMENTS FOR INTERNSHIP

### Pre-Service Training Completed

#### Statement of Eligibility Letter (SOE)

You must provide your school with your SOE to show you have completed your pre-service training and are eligible for employment.

#### Probationary or Intern Certificate

In order to set up your Internship, you must apply for your teaching certificate through the TEA, allowing you to be a "teacher of record."

#### Fingerprinting

You must complete a national criminal history background check through the TEA.

## DURING YOUR INTERNSHIP

### Classroom Support

You will be assigned to an experienced Field Supervisor who will observe you during your Internship, and provide constructive feedback.

### Internship Coursework

Module 3: Educational Technology

### Mentor Teacher Assignments

TxBESS - Texas Beginning Educator Support System. These assignments consist of activities you will complete with your assigned mentor teacher.

### Blogging

You will have the option to earn CPE hours by blogging weekly on your experiences teaching throughout your Internship.



# Clinical Teaching

Clinical Teaching is a guided assignment that consists of gradually taking on the roles and responsibilities of the classroom teacher. During your assignment, you will work alongside an experienced, certified teacher, which will allow you to practice before you teach! Clinical Teaching is unpaid, however, it is only 14 weeks, allowing you to complete your field assignment much quicker than internship.

## REQUIREMENTS FOR CLINICAL TEACHING

### Pre-Service Training Completed

#### Fingerprinting

You must complete a national criminal history background check through the TEA.

## DURING YOUR CLINICAL TEACHING ASSIGNMENT

### Classroom Support

You will be assigned an experienced Field Supervisor who will observe you during your assignment, and provide you constructive feedback.

### Clinical Teaching Coursework

Module 3: Educational Technology

### Mentor Teacher Assignments

TxBESS - Texas Beginning Educator Support System. These assignments consist of activities you will complete with your assigned mentor teacher.

### Blogging

You will have the option to earn CPE hours by blogging weekly on your experiences teaching throughout your Clinical Teaching assignment.



# Fully Certified

Once you have successfully completed your pre-service training, field experience assignment, field coursework and mentor activities, and your program balance is paid in full, you will receive your standard certificate and be fully certified to teach in the state of Texas!

## STANDARD CERTIFICATE CHECKLIST

### *Pre-Service Training*

- Module 1
- Module 2
- Reading Safari Class Series
- Pre-Service Class Series
- 50 FBE Observation hours
- Fingerprinting
- TExES Content Exam(s)
- PPR Exam

### *Field Experience*

- Successful completion of field assignment and recommendation by field supervisor and school administrator
- Module 3
- TxBESS Mentor Assignments
- Program balance paid in full



# Program Pricing

## TOTAL COST OF PROGRAM

**\$4,750**

Online Application	\$0
Enrollment Fee <i>50% discount through July 2025, regularly \$199</i>	\$99
Monthly Access <i>50% discount through July 2025, regularly \$199</i>	\$99

## HOW IT WORKS

Once accepted, you pay your \$99 enrollment fee, which allows you full access to the teacher curriculum so you can get started! Low monthly payments of \$99 will continue until you begin your field experience in the classroom, at which point your total remaining balance will be divided over 12 months. **See example below....**

Month 1 - \$99 (Enrollment)  
 Month 2 - \$99  
 Month 3 - \$99  
 Month 4 - Started Field Experience

### Total Paid \$297

Remaining Balance \$4,453  
 Once hired, pay in full or pay \$362.83 for 12 months. 24 month financing also available with approved credit.

## PAY-IN-FULL PRICING

**\$3,950**

## HOW IT WORKS

Once accepted, if you choose to pay your balance in full, you will submit a one-time payment of \$3,950 and receive an \$800 program discount! Can also be paid in three installments of \$1,383.33 (\$200 service fee added to this option)



# Additional Costs

As you work toward earning your certification, there will be various additional fees paid to agencies outside of Web-Centric program. Below is a list of what you can expect.

## CERTIFICATION FEES PAID TO THE STATE

TEA Technology Fee	TEA: upon enrollment	\$35
Background Check	TEA: upon scheduling	\$50.25
Intern or Probationary	TEA: upon applying	\$78
Standard Certificate	TEA: upon applying	\$78

## EXAM FEES PAID TO THE STATE TESTING PROVIDER

TEXES Content Exam	Pearson: upon registration	\$116+
STR exam*	Pearson: upon registration	\$136
PPR exam	Pearson: upon registration	\$116
PACT exam*	Pearson: upon registration	\$106

*\*Exam not required by all candidates*

# Frequently Asked Questions

**How long does it take to be accepted to the program?**

Once we receive all required documentation, it usually takes 2-3 business days to receive a formal letter of acceptance to the program.

**How long do I have to start the program once I'm accepted?**

Your acceptance offer to begin the program is valid for 30 days.

**Am I able to get certified in an area that doesn't match my college major?**

Yes. If your college transcripts do not contain the credit hours to qualify for an area you wish to certify in, you may take a pre-admission content test (PACT) to determine eligibility.

**What is a PACT and how do I take one?**

A PACT is used to assess your subject-area knowledge in a particular certification area. If you have a GPA below 2.5, or you lack the credit hours in the subject you wish to certify, a PACT can be used to determine your eligibility. A TX PACT is not the same as a TExES Content Exam. To learn more about PACTs and to register, click [here](#).

**How long is the program?**

Most candidates complete their pre-service training in 4-12 weeks. However, you have the ability to complete the program at your own pace.

**What requirements must I complete before taking my content exam?**

You must complete the introductory curriculum in Module 1, and demonstrate proficiency on a practice test in your study material before granted first attempt approval to register and take your content test.

**A school is asking for my Statement of Eligibility letter; when do I get this?**

You will receive your SOE letter upon passing your TExES content exam(s). After receiving your scores, your SOE will be available for download in the WCACP portal within 2-3 business days.

**Does WCACP offer assistance finding a job?**

We offer candidates an employment guide, resume assistance, and post information regarding job fairs and hiring events. Once eligible for hire, candidates are added to our candidate search database that is distributed to districts throughout the state.

**Does my prior experience count for anything?**

Unfortunately, while any prior experience will be an advantage in hiring, it does not count toward your program requirements. The state requires that both your field-based observations and field experience assignment are done under the supervision of the program.